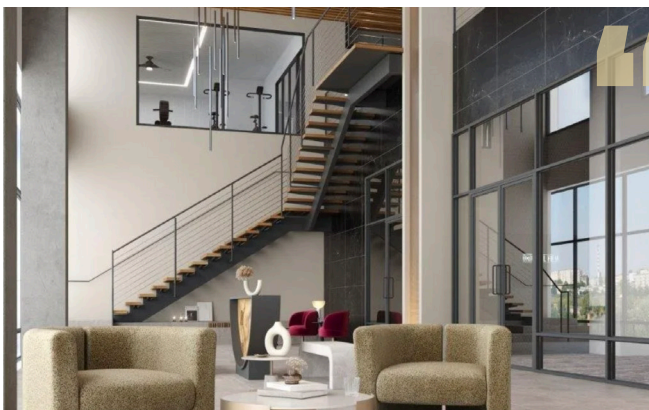


# THE EMORY CASE STUDY



## THE CUSTOMER

The Emory is a new apartment complex located in Historic Downtown Plano, featuring 270 residential units. These units offer 1-, 2-, and 3-bedroom floor plans, with ample space, beautiful features, and desirable amenities. The building provides opportunities to meet friendly neighbors in the residential lounge, work from home in co-workspaces, and relax in the community courtyard. Residents can also lounge by the pool or work out in the 24-hour fitness center.



“Apartment living today is much more than heads in beds. It’s an opportunity to build a true community. Well-managed community-wide Wi-Fi connectivity has become an important differentiator for community owners driving both building efficiency and resident satisfaction.

**ROBERT GROSZ**

President & Chief Operating Officer, *WorldVue*

# THE TECHNOLOGY

WorldVue, a trusted platform for guest-centric technology such as video entertainment and wireless connectivity, partnered with OpenWiFi, a community-developed open-source platform designed to lower the cost of developing and operating Wi-Fi networks, in January 2024. This partnership's first joint installation is at The Emory apartment community, bringing a superior Wi-Fi experience to its residents.

The installation at The Emory incorporates TIP OpenWiFi-certified software and hardware, including Edgecore's OpenWiFi-Ready Access Points (APs) and switches and NetExperience's vendor-agnostic OpenWiFi Cloud Management and Controller Platform. The deployment of a fully managed solution using OpenWiFi ensures that residents have access to a Wi-Fi solution that is constantly optimizing the quality and speed of their connection by minimizing the RF interference using automated, advanced radio resource management and channel planning. This supports WorldVue's goal of advancing global connectivity and innovation through open collaboration.

Due to the size of the property, the technology is being deployed in phases. WorldVue is in the process of deploying 299 access points, with 124 currently installed. Phase A has been launched, comprising 77 occupied units, with the first phase of residents moving in May.



This installation by WorldVue represents the future of multi-family managed Wi-Fi. The benefits to the residents are numerous including private area networks and dramatically improved RF performance compared to ad-hoc individual home gateways. This type of managed network is critical for today's high demand of Wi-Fi including 4K+ TVs, real time gaming and AR/VR. We congratulate WorldVue and the Emory building for this innovative deployment and we look forward to working with WorldVue on many other similar properties in the future.

**BERNARD HERSCOVICI**  
Founder & Chief Executive Officer, *NetExperience*

## SCOPE OF WORK

- Deployment of 299 access points, with 94 currently installed.
- Launch of Phase A, with the first residents moving in May.
- Provision of a 5GB circuit.
- Deployment of four different models of EdgeCore switches, all POE:
  - ECS4125-10P
  - ECS4150-28P
  - ECS4150-54P
  - ECS5520-18T



## ACCESS POINTS

- Deployment of EdgeCore APs, all WiFi 6-enabled, ceiling-mounted in the middle of the units:
  - EAP101 indoor 2x2 WiFi 6 ceiling or wall mount
  - EAP102 indoor 4x4 WiFi 6 ceiling or wall mount
  - OAP101-6E outdoor Wifi 6 wall or pole mount
- Deployment of Eagle Eye Networks Cameras & Brivo Smart Home Gateways
- Installation of IoT devices such as Honeywell thermostats & Yale door locks
- Utilization of mPSK through the NetExperience portal for authentication and provisioning of Personal Area Networks for all residents.

## CLOUD MANAGEMENT & CONTROLLER PLATFORM

- All switches and APs managed by the NetExperience cloud-based management and controller platform
  - Location-based, automated management and provisioning
  - Profile-based provisioning ensuring consistency of configuration
  - Automated advanced radio resource management and channel planning to optimize the quality of experience for residents by significantly reducing RF interference
  - Advanced troubleshooting tools enabling support for residents without the need to roll a truck
  - Support for OpenRoaming and Passpoint

## CONCLUSION

The partnership between WorldVue and OpenWiFi at The Emory exemplifies the future of connected living. This pioneering installation demonstrates the benefits of open-source technology and collaboration in the multifamily industry. From a guest perspective, residents at The Emory enjoy seamless, high-speed Wi-Fi connectivity that enhances their daily lives, whether they're working from home, streaming entertainment, or managing smart home devices. Incorporating NetExperience's mPSK technology means each resident benefits by having their own personal area network enabling them to connect to their home network even if they are roaming outside of their units at any of the common areas, for example the gym. The flexibility and reliability of the network ensures a superior living experience, meeting the demands of modern digital lifestyles.

For the staff, advanced technology simplifies network management and reduces operational costs compared to traditional WiFi solutions. The use of TIP OpenWiFi-certified hardware and software allows for easy setup and maintenance, freeing staff to focus on providing exceptional service to residents. The addition of managed IoT devices further streamlines property management, offering efficient control over environmental systems and security.

Overall, this installation not only delivers enhanced connectivity and convenience for residents but also empowers The Emory's staff with tools to manage the property more effectively.

As WorldVue and OpenWiFi continue to collaborate, this partnership sets a new standard for the multifamily industry, driving forward global connectivity and innovation.